

Application

Definite Purpose Contactors are intended for use in applications where the control requirements are well defined. They are not recommended for general industrial use.

As a magnetic motor controller, they are inductively rated for both maximum continuous current and maximum locked rotor current. Resistive ratings apply to resistive heating applications only.

Joslyn Clark definite purpose contactors have been specifically designed for use with air conditioning, heating and refrigeration control equipment. They are suitable for other non cycling duty applications requiring reliable low cost switching.

Low Coil Inrush and Sealed VA

Provides maximum efficiency, permitting potential cost savings on transformer requirements. This efficient magnet system assures clean pick-up and drop-out without chattering when subjected to slowly rising and slowly decreasing voltages.

Versatile Operating Positions

Joslyn Clark 2 pole contactors are designed to operate effectively in the vertical, horizontal or tabletop mounting positions. This gives design engineers maximum versatility for designing low cost systems.

Interchangeable

Along with being compact in size, the mounting plate is designed to facilitate proper alignment and interchangeability with practically all competitive 2 pole contactors. Also, the low v-a permits direct interchangeability without requiring a transformer change.

Terminals

As an optional feature, Joslyn Clark contactors can be supplied with pressure clamp terminals which are UL Recognized for field connections of #14 through #8 copper wire. They may also be supplied with box lugs for #4 through #14 Al/ Cu wire.

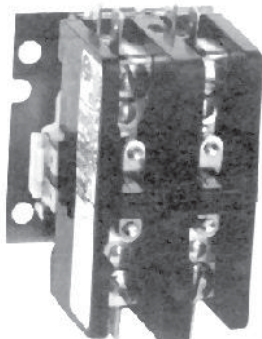
Up To 600 Volts A-C Rating

The 2 pole contactors have been designed with the customer in mind. They provide clearance between terminals permitting total utilization of all quick connects without requiring special insulation between terminals on equipment rated up to 600 volts.



2 Pole Contactors - Type DP2

20, 25 and 30 Ampere (Discount Schedule JC54)



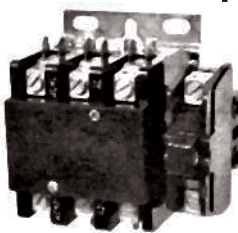
Type	Amp. Ratings		LRA	Volts	Model Number	Catalog Number	
	FLA	Res					
DP2	20	30	100	240/277	DP2C202- *	A77-306680A- *	
	10	25	50	480			
	10	25	50	600			
	25	25	30	125	240/277	DP2C252- *	A77-306658A- *
		10	25	50	480		
		10	25	50	600		
	25	25	35	150	240/277	DP2HC252- ¹ *	A77-306660A- ¹ *
		21	35	125	480		
		17	35	100	600		
	30	30	40	150	240/277	DP2C302- ¹ *	A77-306657A- ¹ *
		15	40	75	480		
		12.5	40	60	600		
----	50	----	600	DP2HC302- *	A77-306657A-5 *		

2, 3 & 4 Pole Contactors - Type DP3

25, 30 & 40 Amp. (Discount Schedule JC54)

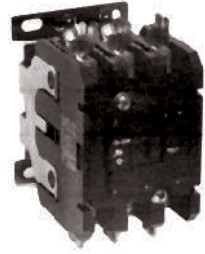


Type	Amp. Rating		Locked Rotor Amps.			Poles	Model Number	Catalog Number
	FLA	Res	240V	480V	600V			
DP3	25	30	150	125	100	2	DP3C252- *	A77-309039A- *
						3	DP3C253- *	A77-309040A- *
						4	DP3C254- *	A77-309026A- *
	25	35	150	125	100	2	DP3HC252- *	A77-309041A- *
						3	DP3HC253- *	A77-309042A- *
						4	DP3C302- *	A77-309043A- *
	30	40	180	150	120	3	DP3C303- *	A77-309044A- *
						4	DP3C304- *	A77-309027A- *
						3	DP3HC303- *	A77-309044A-15- *
	-	50	-	-	-	3	DP3C402- [†]	A77-309045A- ¹ *
	40	50	240	200	160	2	DP3C403- [†]	A77-309046A- ¹ *
						3	DP3C404- ¹	A77-309028A- ¹
4						DP3LC503- [‡]	A77-309046A-15* ¹	



2 & 3 Pole Contactors - Type DP5

50 and 60 Amp. (Discount Schedule JC50)



Type	Amp. Rating		Locked Rotor Amps.			Poles	Model Number	Catalog Number
	FLA	Res	240V	480V	600V			
DP5	50	65	300	250	200	2	DP5C502- *	DP5C502- *
						3	DP5C503- *	DP5C503- *
	60	75	360	300	240	2	DP5C602- *	DP5C602- *
						3	DP5C603- *	DP5C603- *

Ordering Information

● Use complete catalog number. Replace the (*) with a suffix from the Coil Table.

● Engineering Data- Page H6
● Modification Data- Page H5

Example:

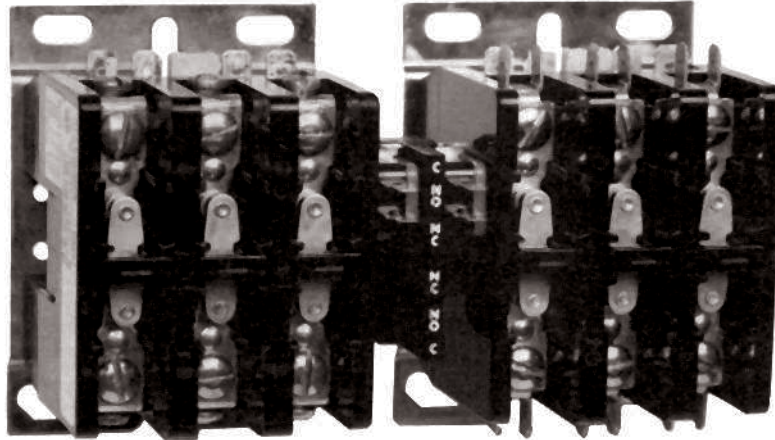
DP3C303-24 (A77-309044A-3) is a 3 pole 30 ampere, contactor with a 24 Volt, 50/60 Hz Coil.

Note:

1- comes with cover

Coil Table

50/ 60Hz Voltage	Model No. Suffix	Cat.No. Suffix		
		DP3	DP2	DP5
120	-120	1	1	120.
208-240	-240	2	2	240.
24	-24	3	3	24.
277	-277	Factory	Factory	277.
480	-480	Factory	Factory	480.



Reversing Contactors - Mechanically & Electrically Interlocked Type DP33 - Bulletin 7735

25, 30 & 40 Amp.

Type	Current Ratings					Maximum 3 Phase Horsepower Ratings						Model No.	Catalog No.	No. of Aux. Contacts
	Amp. Rating		Locked Rotor Amps.			General Duty			Jogging Duty					
	Ind.	Res.	240V	480V	600V	200V	240V	460/575V	200V	240V	460/575V			
DP33	25	30	150	125	100	5	7 1/2	15	3	3	7 1/2	DP33C253-*	A77-350735A-*	2 4
	30	40	180	150	120	7 1/2	10	15	5	5	7 1/2	DP33C303-*	A77-350737A-*	2 4
	40	50	240	200	160	10	10	25	5	7 1/2	15	DP33C403-*	A77-352100A-*	2 4

Mechanically and electrically interlocked contactors for low cost motor reversing applications such as hoists, doors, gates, etc.. Standard assembly includes mechanical interlock with two SPDT auxiliary contacts for electrical interlocking. Four additional auxiliary contacts may be factory added. Two may be field added.

Use jogging duty rating on full-voltage magnetic controllers for plug-stop, plug-reverse and jogging duty regarding repeated interruption of stalled motor current or repeated closing of high transient currents encountered in rapid motor reversal beyond five openings or closings per minute or more than ten in a ten minute period.

Approvals

Underwriters Laboratories, Inc. recognized component for air conditioning, refrigeration and resistance heating equipment. File number E6591, Section 27. Guide number NLDX2.

Canadian Standards Associations (CSA) Guide 361-E-0.2 Class 1222 File 18156-55

4
2
2

Ordering Information

- Use complete catalog number. Replace the (*) with the suffix from the coil table.

Example: DP33C253-120 (A77-350735A-1) is a 3 Phase, 25 amp., reversing contactor with 120V, 50/60 HZ coil and SPDT auxiliary.

Coil Table

50/60Hz Voltage	Model No.		Cat. No.	
	2 Aux.	4 Aux.	2 Aux.	4 Aux.
120	120	120CC	1	4
208-240	240	240CC	2	5
24	24	24CC	3	6
480	480	480CC		

Modifications and Parts Definite Purpose Contactors-DP

Types DP2, DP3, DP5, DP, DP33, and DP3S Accessories & Parts Kits

Description	TypeDP2 20, 25 & 30 Ampere	TypeDP3, DP33 25, 30, & 40 Ampere	TypeDP5 50 & 60 Ampere
	Catalog Number	Catalog Number	Catalog Number
SPDT Auxiliary Contact Kit	----	KHP-C ²	----
N.O. Auxiliary Contact Kit	----	----	KDP5-10
N.O. & N.C. Auxiliary Contact Kit	----	----	KDP5-11
Contact Cover	A77-356577A-1	A77-356577A-2	----
Pressure (Box) Lug Kit (Contains 3 Lugs)	A77-352648A	A77-352648A	----

Replacement Coil Kits

Description	TypeDP3, DP33 25, 30 & 40 Ampere	TypeDP5 50 & 60 Ampere
	Catalog Number	Catalog Number
120V, 50/60Hz	KTB170-1	CDP5-120
208-240V, 50/60Hz	KTB170-2	CDP5-240
24V, 50/60Hz	KTB170-3	CDP5-24
277V, 50/60Hz	KTB170-4	CDP5-277
480V, 50/60Hz	KTB170-5	CDP5-480
600V, 60Hz	KTB170-6	CDP5-600

Field Modifications ¹

Type 1 Enclosure Kit	P6E-01	
----------------------	--------	--

2 Pole Contactors, Type DP2

Coil Volts 50/60Hz	Max. Inrush VA	Max. Sealed VA	Pick-up Volts	D-C Resistance Ohms
24	31	7	18	11
120	31	7	90	290
208-240	31	7	176	1173

Coil insulation - Class B
Coil connections - Double male 1/4" quick connect
Maximum ambient - 155°F

Dimensions (Approximate)

3 & 4 Pole Contactors - Type DP3

Coil Volts 50/60Hz	Inrush VA	Sealed VA	Pick-up Volts	D-C Resistance Ohms
24	48	8.4	16	6.5
120	48	8.4	80	170
208-240	48	8.4	160	680

Dimensions (Approximate)

3 Pole Contactor - Type DP5

Coil Characteristics
Inrush VA 204
Sealed VA 36.5

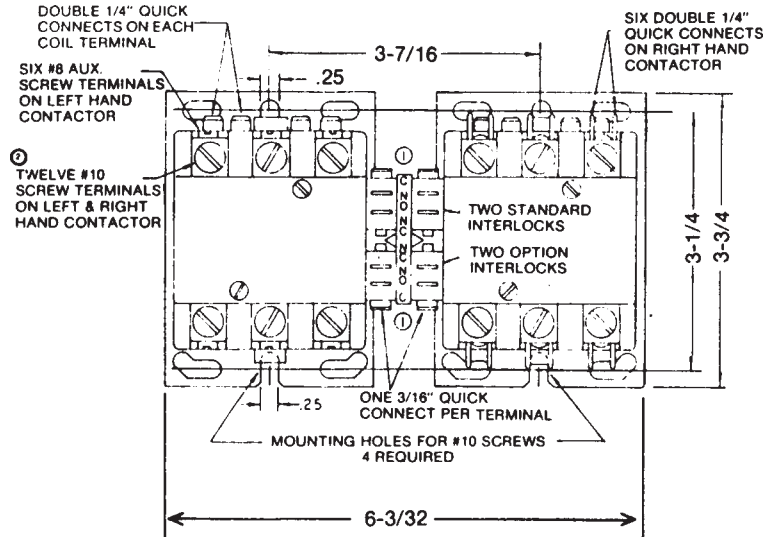
Dimensions (Approximate)

Approvals

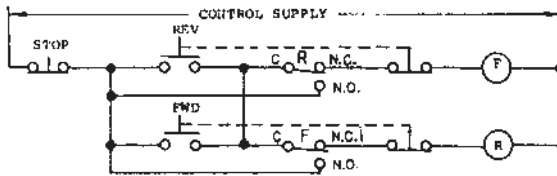
Underwriters Laboratories, Inc. recognized component for air conditioning, refrigeration, and resistance heating equipment. File Number #E6591. Guide Number NLDX2.

Canadian Standards Associations (CSA) Guide Number 361-E0.2, File Number LX18156-39.

Dimension - DP33 (Two 3-Pole Mechanically & Electrically Interlock Contactors)



Typical wiring diagram for Electrically held Reverser using Mechanically Interlocked Push Buttons.



Electrically Held Contactors and Mechanically Interlocked Pushbuttons Using Two SPDT Auxiliary Contacts.

Four additional auxiliary contacts may be factory added. Two may be field added.

Coil Characteristics

Coil Volts 50/60Hz	Inrush VA	Sealed VA	Pick-up Volts	D-C Resistance Ohms
24	48	8.4	16	6.5
120	48	8.4	80	170
208-240	48	8.4	160	680

Coil insulation - Class B
 Coil connections - Double male 1/4" quick connect
 Maximum ambient - 155°F

Approvals

Underwriters Laboratories, Inc. recognized component for air conditioning, refrigeration and resistance heating equipment. File number E6591. Guide number NLDX2.

Canadian Standard Association (CSA) Guide number 361-E0.2, File number LX18156-39.